



**ROMAN  
ELECTRIC  
CO., INC.**

**VOLUME 27, NUMBER 1  
SPRING, 2012**

**INSIDE**

- School Construction,  
continued..... 2
- New Arena and Milwaukee  
Theater Signage ..... 2
- Benefits of Standby  
Power..... 3
- Resort-Style Apartments .... 4
- MC<sup>2</sup> School, conclusion ... 4

**“COMMENT”**

*“Both Everest College and MC<sup>2</sup> High School had very tight time frames. The new schools were built in old buildings so structural components sometimes had to be replaced, complicating the work. With our substantial resources we were able to work closely with the contractors to accommodate the fast schedules. Our crews did terrific jobs on both.”*



**Phil Rose  
President**

# CURRENT

## events

Electrical Construction and Communication  
Network News for Business and Industry



*The new Milwaukee campus for Everest College is at 1311 N. 6th St. in Haymarket Square.*

## Two Schools Constructed in Very Tight Time Frames

Roman Electric installed the electrical systems for two new schools where timely construction was critical. One was renovating an old warehouse for Corinthian College. The other was converting another old building into an unusual high school for Seeds of Health.

### Everest College

Corinthian Colleges, Inc., one of the largest for-profit post-secondary education companies in North America with three different schools, opened a Milwaukee campus for Everest College. Located at 1311 N. 6th St. in Haymarket Square, Everest offers diploma and/or degree programs for Dental Assistant, Medical Assistant, Medical Insurance Billing/Coding and Pharmacy Technician careers.

Greg Golick, Senior Director of Construction Management for Corinthian

Colleges, Inc. said he wasn't much involved with Roman Electric because Corinthian hired a construction manager, Jones Lang LaSalle, which hired general contractor VJS Construction Services, which in turn hired Roman Electric.

But Greg became aware of them later. “At crunch time at the end of the job,” he said, “we had a crisis. We couldn't get our occupancy permit because

the city inspector added new electrical requirements at the last hour. Within 24 hours Roman had procured and installed several new exit signs and additional lighting even though they were not responsible for it. I was so impressed with their responsiveness in coming to our aid at my request that I look forward to working with them again as soon as possible.”

Scott Henricks, project manager for VJS, said, “Roman did an outstanding job. We had to work through an array of changes and had a lot of different hoops to jump through. For a job that ran like a fire drill, there was little of the yelling that sometimes happens on rush jobs. Roman did a bang up job.”

Mark Sullivan, Everest president, said, “Roman was awesome. They took the time to walk me through the entire electrical system, show me how it worked and explain all the bells and whistles. It was above and beyond what I expected of them.”

*Continued on page 2*



*A 12,000 sq. ft. former retail store was converted into the 7th through 12th grade blended virtual charter school MC<sup>2</sup>.*

## Speedy Renovation

Continued from page 1

### MC<sup>2</sup> School

Milwaukee Cyber Community, MC<sup>2</sup>, a public charter high school at 131 South 1st St., is the first blended virtual school for 7th through 12th grade students in Milwaukee. Its unique style of learning combines online curriculum, self-paced work and face-to-face teacher support to re-envision, re-create and re-engage students.

The school is operated by Seeds of Health, Inc., founded in 1983, a forward-thinking education system dedicated to serving the educational needs of urban children in Milwaukee.



**Everest College offers Dental Assistant, Medical Assistant, Medical Insurance Billing/Coding and Pharmacy Technician programs.**

Tiffany May, project manager for Berghammer, general contractor for the high school conversion, said, "We started in early July and turned it over the end of August. We basically had six weeks to convert a 12,000 sq ft former retail store into a school. Roman did great. They performed the job on a design/build basis.

"Roman provided appropriate manpower to meet the demanding schedule. Phil Rose understood the job from the start, and designed it accordingly. Roman played a major role in the project team because, as a virtual school, significant electrical work was required to install 100 computer stations into the space."

Continued on page 4



## New Signage For Wisconsin Center District Significantly Reduces Energy Costs

Wisconsin Center District (WCD) installed three new LED message boards for the US Cellular Arena and the Milwaukee Theater. The signs are located at the corners of 4th St. & W. Kilbourn Ave., and 4th St. and 6th St. at State St.

Roman Electric Co. Inc. installed electrical lines and Roman TechNet put in fiber cable lines for the new computerized message boards.

Bob Seefeld, WCD director of building services for the Wisconsin Center, said, "Roman did a great job. They were prompt, worked with us on any needed changes, coordinated with our electrical staff, and their commercial service manager Barry Dickinson was always available."

WCD chief electrician Fred Albrecht was also pleased. "Of all the subcontractors we work with, Roman is my first choice," he said.

"The personal attention Roman Electric gives you is great. Their price was reasonable too. Barry did a terrific job and electrician Bob Lehman does spectacular work."

*Roman electricians Mike Blankenmeier, in Roman's bucket truck, and Bob Lehman, on the ground, worked on three new Wisconsin Center District LED message boards for the US Cellular Arena and the Milwaukee Theater.*



Fred said before the LEDs were installed, they spent over \$54,000 per year on energy for the three signs which had incandescent lamps. The LED lighting will reduce that to approximately \$4,000 annually. Plus he said WCD got a grant from Focus On Energy which helped with the purchase of the signs.



"If you're like us, you're always looking for new ideas, better methods and new business."

### CURRENT events

is one way we can show you building developments, new power systems, information technologies, skilled techniques, useful ideas. We want you to remember Roman Electric when you're ready to build or repair electrical systems, computer networks, and voice/data installations."



# CURRENT tips

## Standby Power Offers Comfort and Convenience

If you lose your electrical power due to severe storms, transformer failures, Summer brownouts, flooding, extreme cold or heat, how long could you afford to be without electricity?

People are concerned about damage to their largest investment – their home, and maintaining the comfort and safety they rely on. They don't want to experience sump

Electric you don't have to throw a switch, push a button or do anything. The standby power goes on automatically whether you're home or away.

When the power goes out, the transfer switch senses the loss of power, tells the generator outside to fire up, and the generator automatically transfers power to your electrical system bringing it immediately



pump failure, or lose their lighting, heating, air conditioning or security system. They want to keep their food and medicine refrigerated.

With a complete, fully automatic Emergency Standby Power System from Roman

*Because "We lose power here a couple times a year," Dennis Michalowski of Mukwonago had Roman install this standby power generator.*



back on line. Complete Standby Power Systems Include:

- Whole-house generator backup system, fueled by natural gas or propane.
- Automatic transfer upon normal power loss.
- Complete professional



*Standby power systems protect your largest investment: your home and your electrical systems.*

- electrical installation.
- Factory certification (Briggs and Stratton certified dealer).
- Turnkey installation, including gas piping.

*After a storm cut out his power for over three days, Charlie Case of Muskego had Roman put in this standby power generator.*

### Shelter From The Storm

Dennis Michalowski of Oak Tree Drive in Mukwonago had Roman install a standby power system protecting his entire house. "We decided to get the generator because we lose power here a couple times a year." Dennis said. "The last time a tornado hit and we were out for 12 hours. Roman's installation was quick and sharp. They did a very good job."

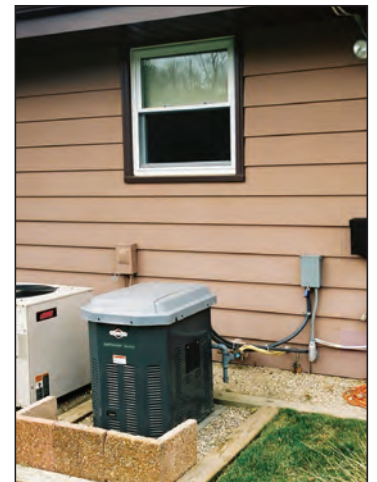
### Protection Against Health Hazards

"We decided to put in a whole house generator because my wife is on oxygen 24/7," said Charlie Case of Schubring Drive in Muskego. "When we had that storm here a few months ago a big pine tree fell across the wires and pulled them off the transformer. We were without power for over three days. But my neighbor's got a generator and he ran a cord over to us and we got our oxygen off that." Charlie said he chose Roman because, "I had them wire up my dishwasher a few years ago

and I was happy with them. They did a good job again."

### Protection Against Flooding

Ralph Schmickel of Scotland Dr. in Vernon had Roman install a standby power generator last year. "During that recent heavy rain our electric was out for close to eight hours," he said. "I've got a finished basement and would have lost



*Ralph Schmickel of Vernon said he would have lost everything in his finished basement during the heavy rainstorm without this standby power generator Roman installed.*

everything if my sump pumps hadn't kept running. I just sat downstairs with the lights on watching TV during the storm. It was awesome!"

For information, and an estimate, on having your own standby power system installed, please give us a call at 414-771-5400.



(414) 771-5400

**Roman Electric Co., Inc.**

640 South 70th Street  
Milwaukee, WI 53214-0396

PRSRT-STD  
U.S. Postage  
PAID  
Milwaukee, WI  
Permit No. 5942

ADDRESS SERVICE REQUESTED



Recycled



**ROMAN  
ELECTRIC  
CO., INC.**

Since 1929

**Roman Electric**

640 South 70th Street  
Milwaukee, WI 53214-0396  
(414) 771-5400

**Racine/Kenosha Office**

2900 Wisconsin Street  
Sturtevant, WI 53177-2449  
(262) 886-3742

Visit Our Websites at:

[www.romanelectric.com](http://www.romanelectric.com)  
[www.romantech.net](http://www.romantech.net)

## 248 Luxurious, Spacious, Environmentally-Friendly Apartments in Resort-Style Setting

The Lodge, Waukesha's newest apartment community at 1408 Rockridge Road, is nestled in the Pebble Creek Nature Preserve bordered by ancient oaks and poplars. Four buildings, each

with 62 one- and two-bedroom units, feature prestigious apartments with unique floor plans and designer kitchens.

Developer Bryce P. Styza chose environmentally-friendly

*The Lodge's four 62 unit buildings feature luxurious apartments situated in the natural beauty of 15 rolling acres with woods, trails and a creek.*



materials in the design and construction of The Lodge, and set it in a great location for outdoor enthusiasts. Harmony Homes was construction manager and Steve Kassens served as project manager. Roman Electric installed all the electrical systems. Jeff Kubiszewski was account manager.

Steve said the complex was built under the old code and midway through the project the new codes came into effect. "We'd been working on the project for two years so had to go back and retrofit to meet the new codes. Roman was in the forefront of the changes and as we proceeded on the job Roman was quick to comply with the new codes and adapted very well to the changes. They did a good job." 

## MC<sup>2</sup> School

*Continued from page 2*

Marcia Spector, Seeds of Health executive director, said, "After a lot of evaluation, we decided to buy an old third ward building and rehab it for a new school. Much electrical work was required to rebuild the old building into MC<sup>2</sup>. Roman did a great job installing the new technology needed for the school. We're very pleased with Roman's work." 



*Classes at MC<sup>2</sup> combine online curriculum, self-paced work and face-to-face teacher support.*